

Annex 10/1: Identification Results

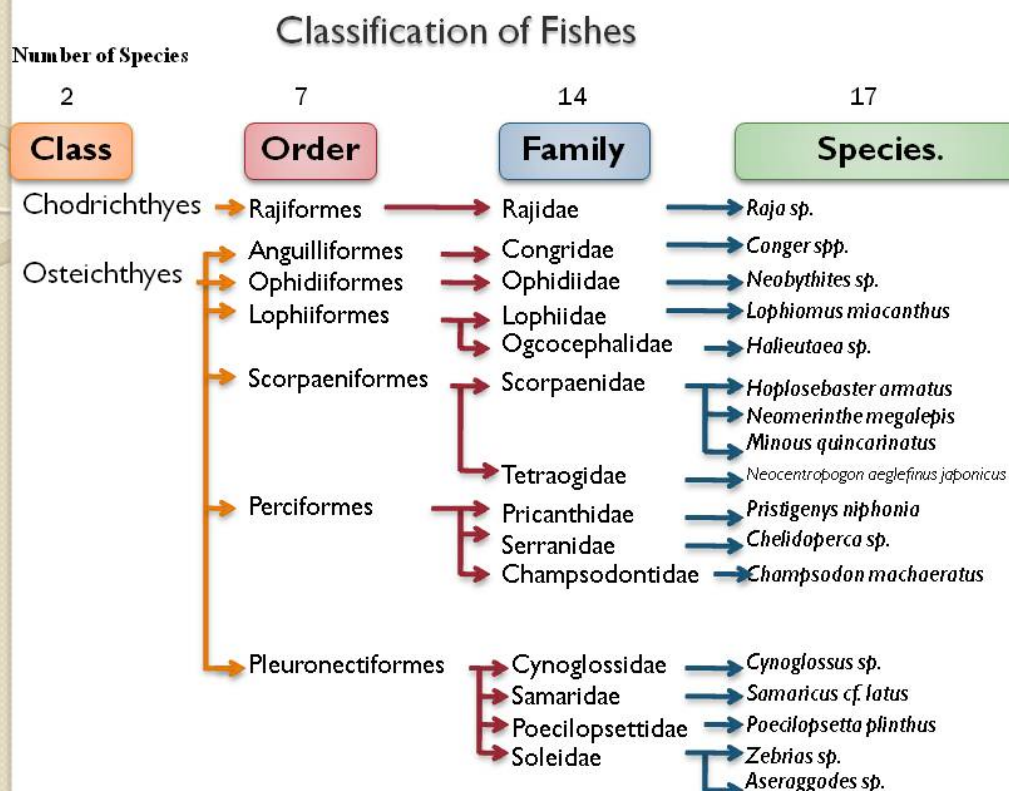
By Mr. Sayan Promjinda and Mr. Nakaret Yasook (SEAFDEC/TD)

TRAINING/WORKSHOP ON IDENTIFICATION OF Deep-Sea Fishes

18-22 January 2010

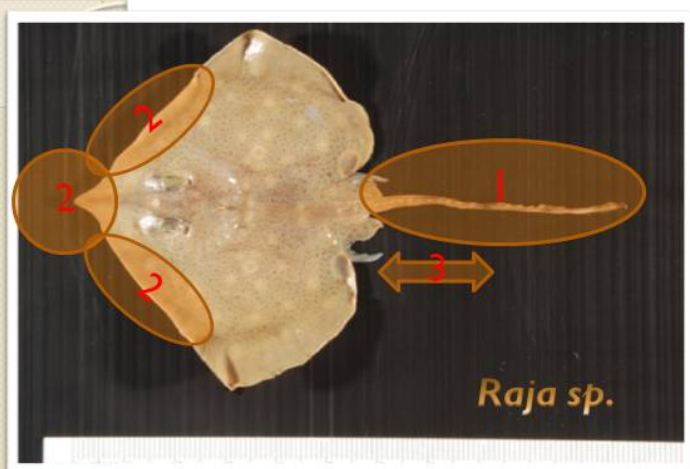
SAYAN PROMJINDA
NAKARET YASOOK

Vessel	M.V.SEAFFDEC 2
Type of gear	Beam trawl
Location	Lat 05_00'.60 N – 04_57'.90 N Long 113_51'.70 E – 113_49'.20 E
Depth	116 meter
Date	28 March 2009
Locality	Brunei Darussalam water





Class Elasmobranchii
Order Rajiformes
Suborder Rajoidei
Family Rajidae
Scientific name *Raja sp.*



1. Tail with caudal fin but without large spines (many small spines)
2. Snout pointed, outline between tip of snout and pectoral fin slightly concave
3. 1st dorsal fin far behind pelvic fin

(key to family;)



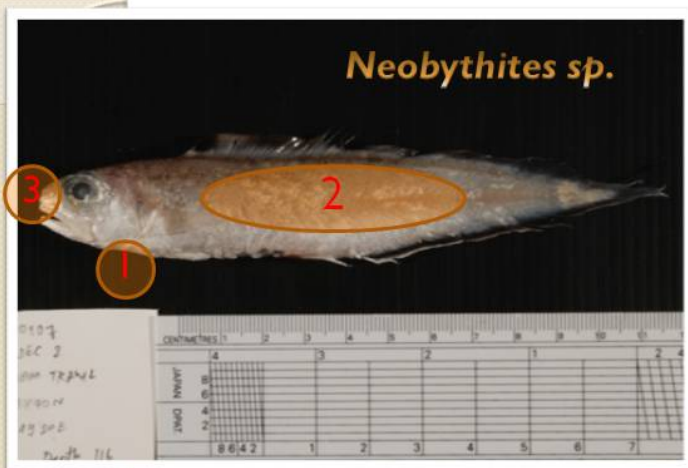
Class Osteichthyes
Order Anguilliformes
Suborder Anguilloidei
Family Congridae
Scientific name *Conger* sp.



1. Body moderate elongate; preanal length less than 40%
2. End of branchiostegal rays do not protrude freely through gill opening
3. Lip well develop and maxillary and mandibular teeth in 2 rows

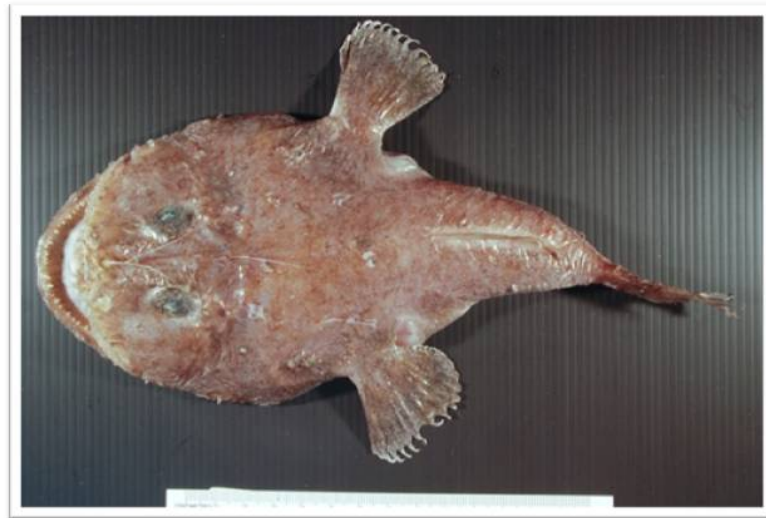


Class Osteichthyes
Order Ophidiiformes
Suborder Ophidioidei
Family Ophiidae
Scientific name *Neobythites* sp.



Dorsal fin : 98
Anal fin : 73
Pectoral fin : 25
Pelvic fin : 2

1. Pelvic fin with 2 soft rays
2. Some markings on body
3. Anterior nostril without thick rim



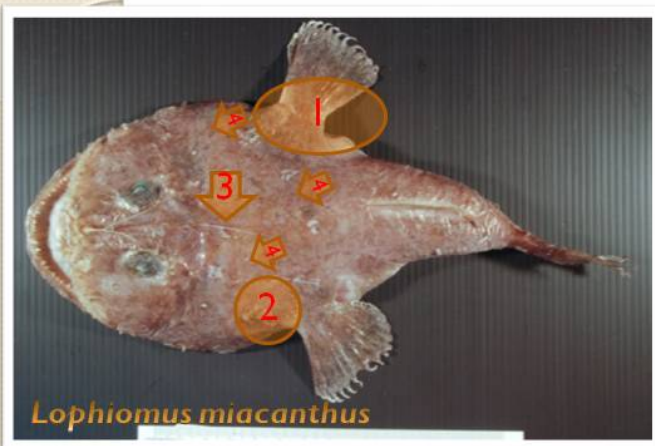
Class Osteichthyes

Order Lophiiformes

Suborder Lophioidei

Family Lophiidae

Scientific name *Lophiomus micanthus*



1. Anterior end of gill-slit extending dorsally over origin of pectoral fin

2. Humeral spines bifurcate or more

3. 3rd dorsal fin spine shorter than head length

4. Small white spots scattered on head

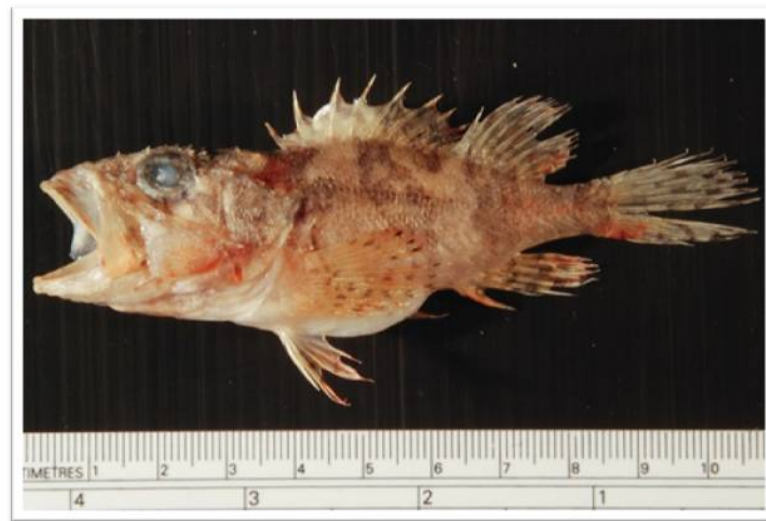


Class Osteichthyes
Order Lophiiformes
Suborder Ogcocephaloidei
Family Ogcocephalidae
Scientific name *Halieutaea sp.*



Dorsal fin : 5
Anal fin : 4
Pectoral fin : 8

1. Disc circular; Body strongly depress
2. Gill rakers on upper limb of 1st gill arch
3. Ventral side smooth without small spines



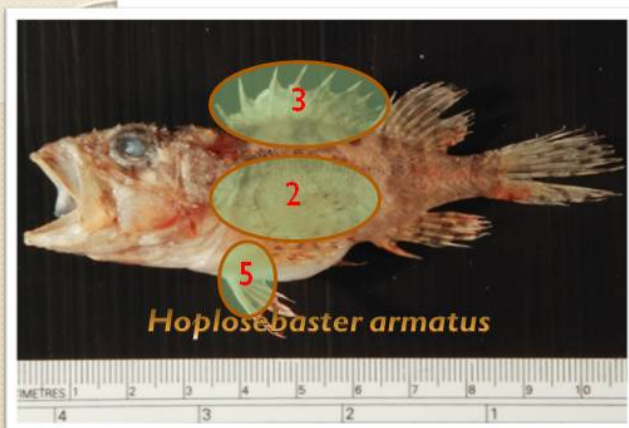
Class Osteichthyes

Order Scorpaeniformes

Suborder Scorpaenoidei

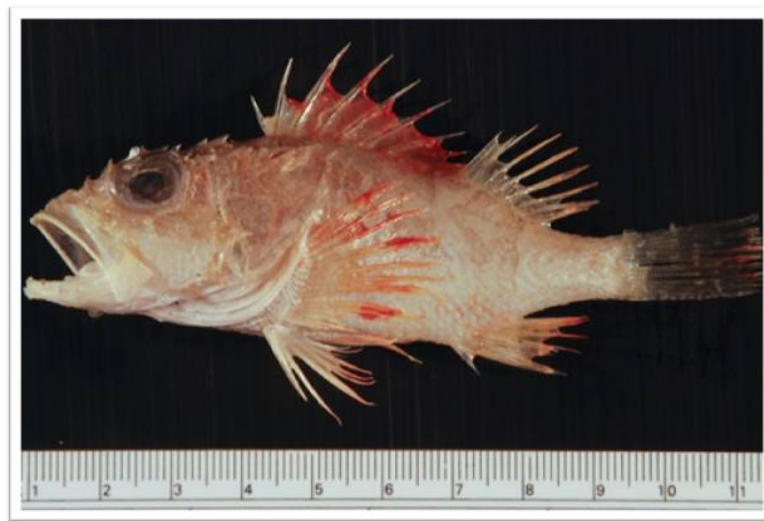
Family Scorpaenidae

Scientific name *Hoplosebaster armatus*

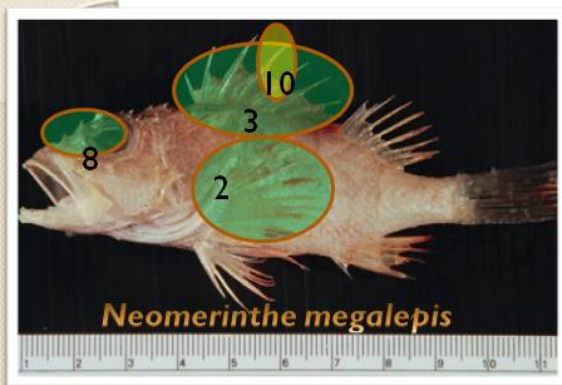


D XIII, 9
A II, 6

1. Lateral line as internal canall
2. Pectoral without lowermost free ray / without notch
3. Dorsal-fin with 13 spines
4. Dorsal-fin spines moderately long, longest about equal to soft rays
5. 2 anal spine, first anal spine minute



Class Osteichthyes
 Order Scorpaeniformes
 Suborder Scorpaenoidei
 Family Scorpaenidae
 Scientific name *Neomerinthe megalepis*



D	XII, 8
A	III, 5
PI	19

1. Lateral line as internal canall
2. Pectoral without lowermost free ray / without notch
3. Dorsal-fin with $11^{1/2}$ spines
4. Palatine teeth present on roof of mouth
5. Occiput inclined / (depressed; *Scorpaena*)
6. At least some rays branched / (fin-ray simple; *Poninus*)
7. Dorsal-fin rays $9^{1/2}$ to $11^{1/2}$ / ($8^{1/2}$ to $10^{1/2}$; *Sebastapistes*)
8. Posterior lacrimal spines relatively strong
9. Pectoral-fin rays 19
10. Fourth dorsal-fin spine longest



Class Osteichthyes

Order Scorpaeniformes

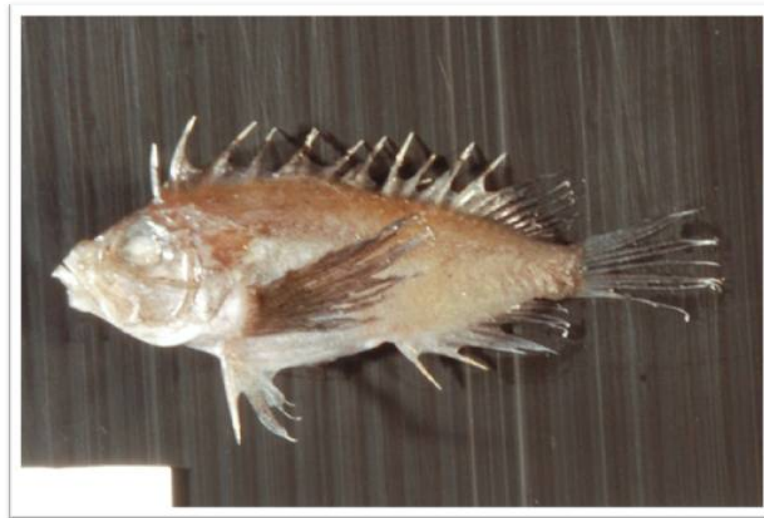
Suborder Scorpaenoidei

Family Scorpaenidae

Scientific name *Minous quincarinatus*



1. Skin at gill opening broadly connected to isthmus
2. Pectoral fins with lowermost 1 – 3 rays free and independently mobile
3. 1st dorsal fin spine equal to or longer than 2nd dorsal fin spine; 1st spine widely separated from base of 2nd spine
4. Caudal fin without transverse dark bars; medial surface of pectoral fin with dark brown stripes; posterior spine of lacrimal bone about twice length of anterior spine and not bayonet-shaped



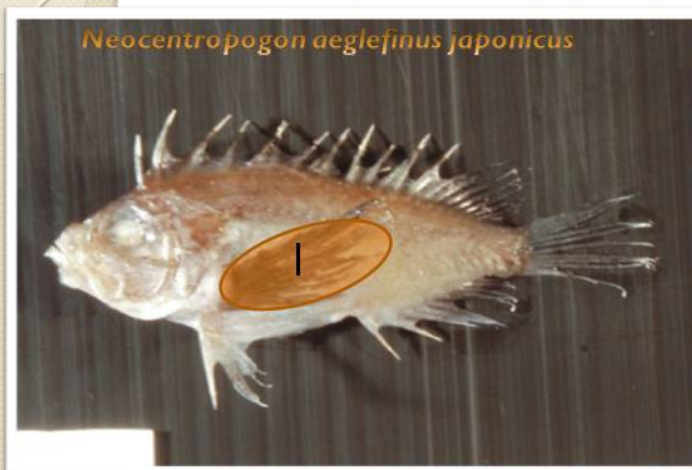
Class Osteichthyes

Order Scorpaeniformes

Suborder Scorpaenoidei

Family Tetraogidae

Scientific name *Neocentropogon aeglefinus japonicus*



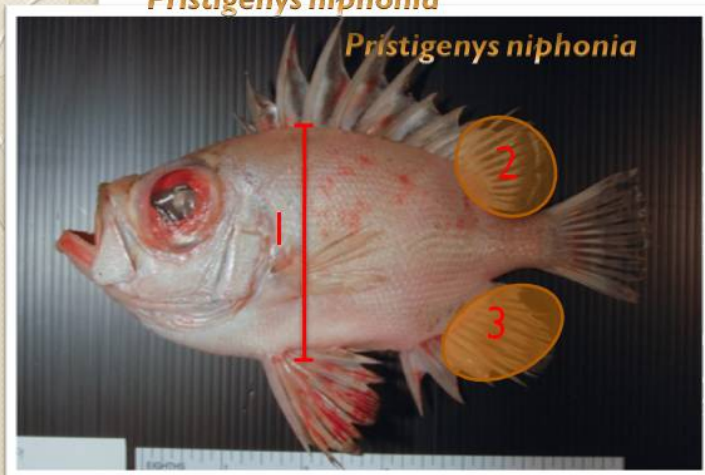
D	XV,7
A	III, 7
PI	15
P2	I,5

1. Pectoral-fin ray simple, elongate filamentously)
2. Body covered with many small cycloid scales



Class Osteichthyes
Order Perciformes
Suborder Percoidei
Family Pricanthidae
Scientific name *Pristigenys niphonica*

Pristigenys niphonica

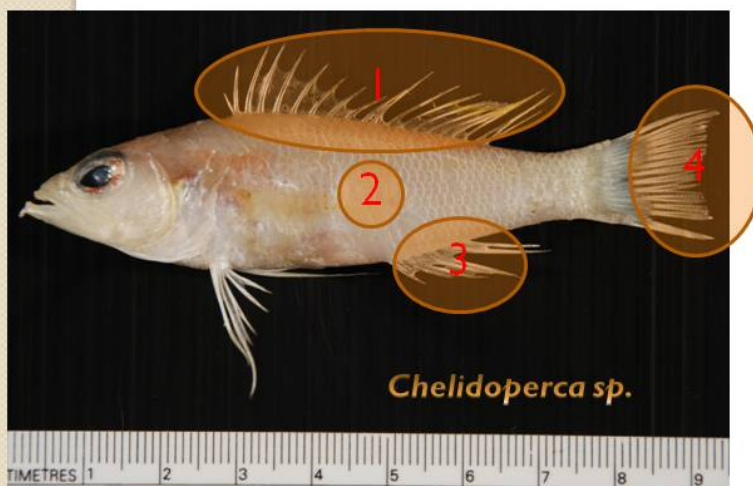


D	X, 11
A	III, 10
LLp	36

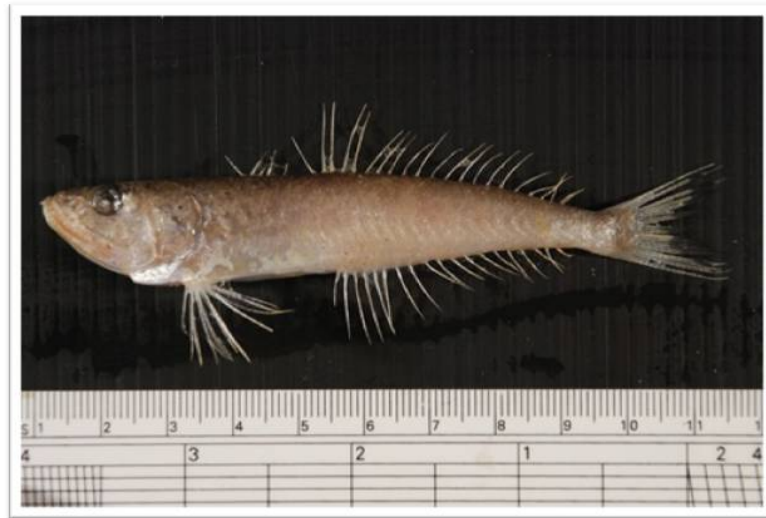
1. Body very deep / (less deep; *Heteropriacanthus*, *Priacanthus* and *Cookeolus*)
2. Dorsal-fin rays II / (12 *P.meyeri*)
3. Anal-fin rays I 0 / (10 *P.meyeri*)



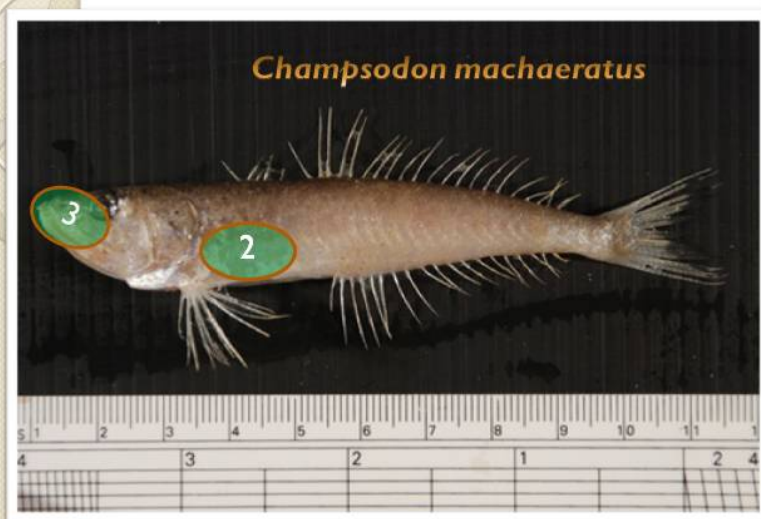
Class Osteichthyes
Order Perciformes
Suborder Percoidei
Family Serranidae
Scientific name *Chelidoperca sp.*



1. Dorsal fin with 10 spines and 9 – 10 soft rays
2. Body without black spots
3. Anal fin with 6 – 9 soft rays
4. Caudal fin emarginated



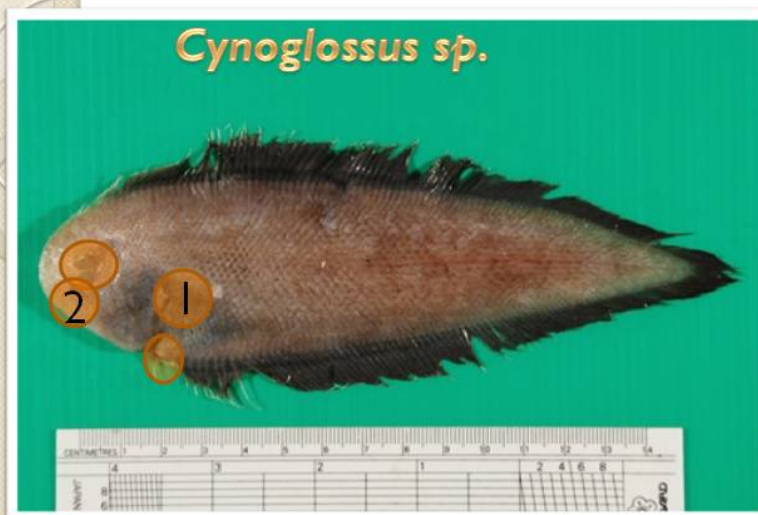
Class Osteichthyes
Order Perciformes
Suborder Trachinoidei
Family Champsodontidae
Scientific name *Champsodon machaeratus*



1. 1st arch wit 1 gill raker on upper limb
2. Breast naked
3. Chin scaly



Class Osteichthyes
Order Pleuronectiformes
Family Cynoglossidae
Scientific name *Cynoglossus* sp.



D 114

1. Pelvic fin without spines / Pectoral fin absent / Eyes on left side of body (key to Fam. Cynoglossidae)
2. Mouth strongly curved / (nearly straight ; *Symphurus*)
3. Lips on ocular side not fringed with tentacle / (with tentacle; *Paraplagusia* sp.)
4. Dorsal-fin 14 - 18, snout round and short

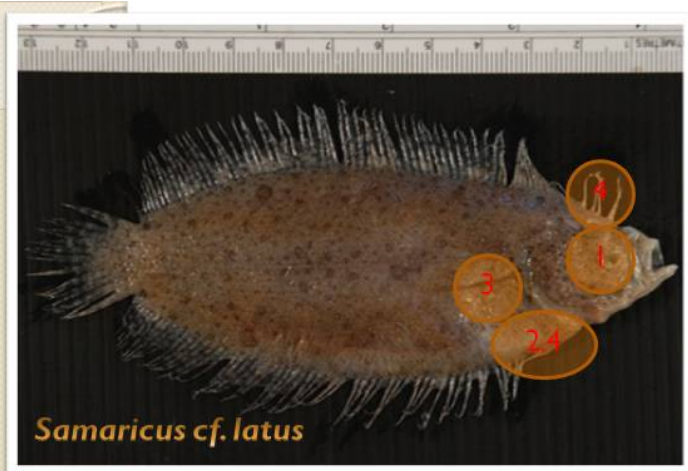


Class Osteichthyes

Order Pleuronectiformes

Family Samaridae

Scientific name *Samaricus cf. latus*



1. Pelvic fin without spines / Pectoral fin distinct / Eyes on right side of body / Pectoral fin absent on blind side (key to Fam. Samaridae)

2. Eye on right side of body

3. Pelvic fin without spines

4. Pectoral fin distinct but absent on blind side

5. Soft ray of anterior part of dorsal fin and pelvic fin not elongated in to filament

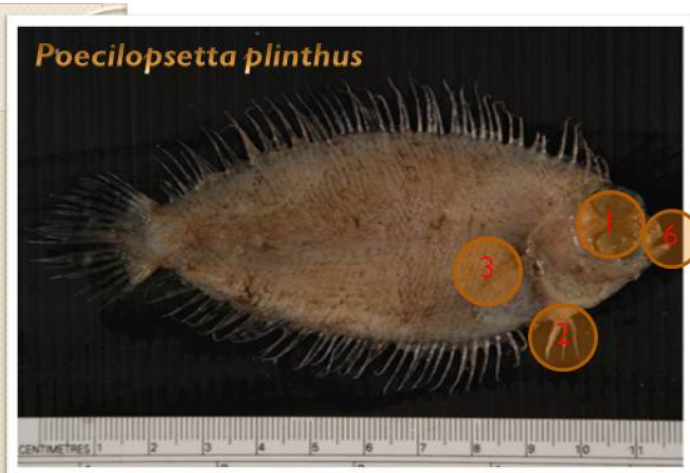


Class Osteichthyes

Order Pleuronectiformes

Family Poecilopsettidae

Scientific name *Poecilopsetta plinthus*



1. Pelvic fin without spines / Pectoral fin distinct / Eyes on right side of body / Pectoral fin present on blind side / Lateral line rudimentary indistinct on blind side (key to Fam. Poecilopsettidae)

Eye on right side of body

2. Pelvic fin without spines

3. Pectoral fin distinct and present on blind side

4. Lateral line rudimentary indistinct on blind side

5. Lateral line scales less than 70

6. Upper-jaw length 3.4 – 3.9 times in head length (this fish = 3.69)

Reffernce key book

- Fish of Japan with pictorial keys to the species, English edition I,II
- FAO Species Identification Guide for Fishery Purposes, The Living Marine Resources of The WESTERN CENTRAL PACIFIC Vol. 3,4 and 6

THANKYOU
FORYOURATTENTION